

MIPRO MM-103

Music & Instrumental Microphone



SPECIFICATION

TYPE : DYNAMIC MICROPHONE

MODE : MM-103

POLAR PATTERN :

SUPER CARDIOID

FREQUENCY RESPONSE :

50Hz~18,000Hz

IMPEDANCE : $300\Omega \pm 30\%$ (at 1000Hz)

SENSITIVITY : $-74\text{dB} \pm 3\text{dB}$

(SPL= 74dB, 0dB=1V/ubar, at 1000Hz indicated by open circuit)

SWITCH : SLIDE POTENTIOMETER TYPE SWITCH

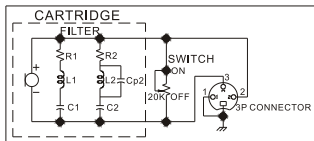
DIMENSIONS : $\phi 52.5 \times 182$ (mm)

WEIGHT : 312g (without cable)

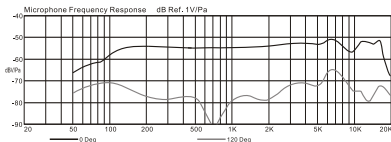
APPLICATION : LIVE PERFORMANCE, AUDIO RECORDING.

MUSIC INSTRUMENTS : VIOLIN, GUITAR, FLUTE, CLARINET, OBOE AND FRENCH HORN.

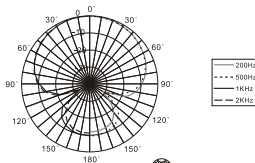
CIRCUIT



TYPICAL FREQUENCY RESPONSE



TYPICAL POLAR PATTERNS



MIPRO MIPRO Electronics Co., Ltd.

Headquarters: 814, Pei-Kang Road, Chiayi, 60096, Taiwan.

Web: www.mipro.com.tw

E-mail: mipro@mipro.com.tw



2CE233 ©

AS101215

Design and specifications are subject to change without prior notice